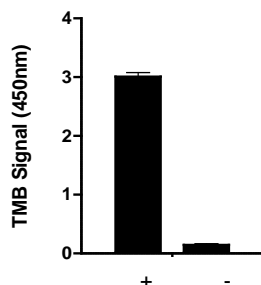
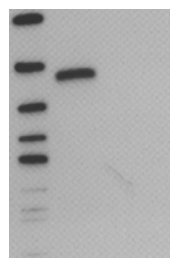


phospho-S6 RP (Ser240/244) InstantOne ELISA™ Kit

Catalog Number: 85-86194

Also known as: S6 Ribosomal Protein

RUO: For Research Use Only. Not for use in diagnostic procedures.



MCF-7 cells were treated with 500ug/mL insulin for 60 min (+) or stimulated with 1ug/mL UCN-01, 200nm Rapamycin and 1ug/mL U0126 for 2hrs (-). Lysates were prepared as described in the InstantOne ELISA™ User Manual. Phosphorylated S6 RP (Ser240/244) was analyzed in cell lysates by immunoblotting (left) and InstantOne ELISA™ (right) using 10ug/analysis. The intensity of the band as detected by immunoblot correlates with InstantOne ELISA™ absorption values.

Product Information

Contents: phospho-S6 RP (Ser240/244)
InstantOne ELISA™



Catalog Number: 85-86194



Temperature Limitation: Store at 2-8°C.

Batch Code: Refer to vial

Use By: Refer to vial

Description

The InstantOne ELISA™ is specifically engineered for accurate measurement of phosphorylated human S6 RP (Ser240/244) in cell lysates. The InstantOne ELISA™ kit allows for fast analysis of samples in approximately one hour. All reagents used in a traditional sandwich ELISA are added in solution to a plate followed by a wash step and detection with the TMB colorimetric substrate.

Ribosomes are structures, consisting of a 40S subunit and a 60S subunit, which catalyze protein synthesis. The 40S subunit binds to the mRNA, while the 60S subunit binds to tRNA and the amino acids to be incorporated into the polypeptide being synthesized. S6 RP (Ribosomal Protein S6) is a component of the 40S subunit. S6 RP is phosphorylated at multiple sites in its C-terminal region, which is correlated with an increase in translation of mRNA transcripts.

Components

User Manual

Phospho-S6 RP (Ser240/244) Capture Antibody Reagent (Part No. IOPS6RPCAR1) - 3 mL

Phospho-S6 RP (Ser240/244) Detection Antibody Reagent (Part No. IOPS6RPDAR1) - 3 mL

InstantOne™ Assay Plate (Part No. IOAP96) - 96 well (sealed)

Cell Lysis Buffer (5X) (Part No. IOCLB1) - 10 mL

Enhancer Solution (Part No. IOES1) - 1 mL

Wash Buffer (10X) (Part No. IOWB1) - 15 mL

Detection Reagent (TMB Substrate) (Part No. IODR1) - 12 mL

Stop Solution (Part No. IOSS1) - 12 mL

Positive Control Cell Lysate (lyophilized) (Part No. IOS6RPPC1) – 0.25 mL

Plate seal - 1 ea

Applications Tested

This assay has been validated for the detection of phosphorylated S6 RP (Ser240/244) in stimulated MCF-7 cell lysates. This assay was evaluated for specificity by immunoblot analysis using the same lysates and antibody (data shown above).

phospho-S6 RP (Ser240/244) InstantOne ELISA™ Kit

Catalog Number: 85-86194

Also known as: S6 Ribosomal Protein

RUO: For Research Use Only. Not for use in diagnostic procedures.

Related Products

IOCLB InstantOne ELISA Cell Lysis Buffer (5X) – 100 mL

IOES InstantOne ELISA Enhancer Solution – 100 mL

IOWB InstantOne ELISA Wash Buffer (10X) – 500 mL