



Animal health

Enhance your animal health workflow

Gibco animal-origin (AO) peptones

gibco



Peptones have a long, proven history of being used to develop high-performance media and feeds spanning the diagnostic, bioproduction, and vaccine industries that focus on both human and animal health. Given the unique nature of peptones and their diverse nutritional profiles, they can provide numerous protective benefits to a cell culture with the addition of just one supplement, including nutritional buffering and protection from toxic components present in a medium or process.

Benefits

- Nutritional diversity: balanced composition to meet specific requirements for all cell types
- Protective effects:
 - Nutritional buffering that protects cells from buildup of toxins
 - Allows higher concentrations of key components to be used
 - Delays onset of apoptosis
- Performance enhancements
 - Can help increase specific productivity across a range of applications: batch, fed-batch, and perfusion
 - Promotes increased cell densities
 - Allows rapid process optimization
- Speed to market
 - Can help achieve higher titer and sustained growth faster
 - Can support consistent performance through scale-up of processes

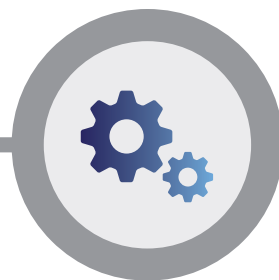
Elevate your bioprocessing equation



Up to 5.5-fold increased yield when added to a chemically defined (CD) medium

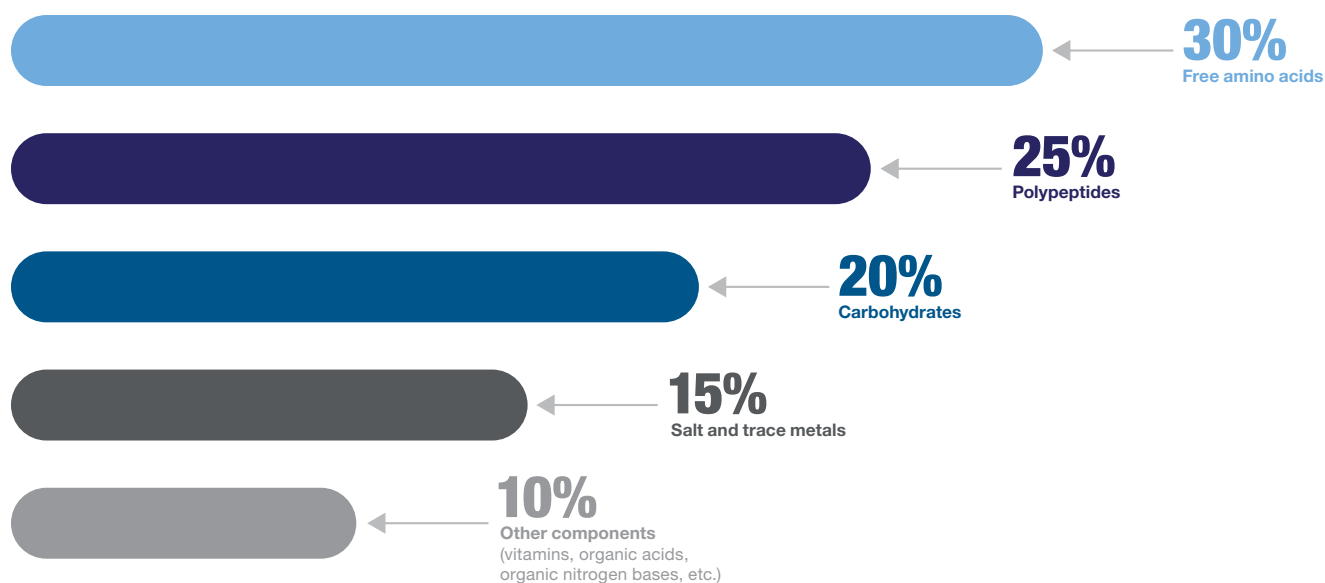


Used in the production of over 150 commercial biologics, including 15 blockbuster drugs



Can be used as a replacement for sera and are the main components of microbial fermentations

Components of a typical peptone



Why Gibco peptones?

- Developed specifically for the biopharmaceutical industry, rather than food applications
- A broad portfolio of peptones to choose from to help meet different performance and regulatory requirements
- Analytical assessment, process modeling, and key driver identification (KDI) services
- Manufactured with tight quality control and strict raw material specifications
- Access to in-depth technical support and experience

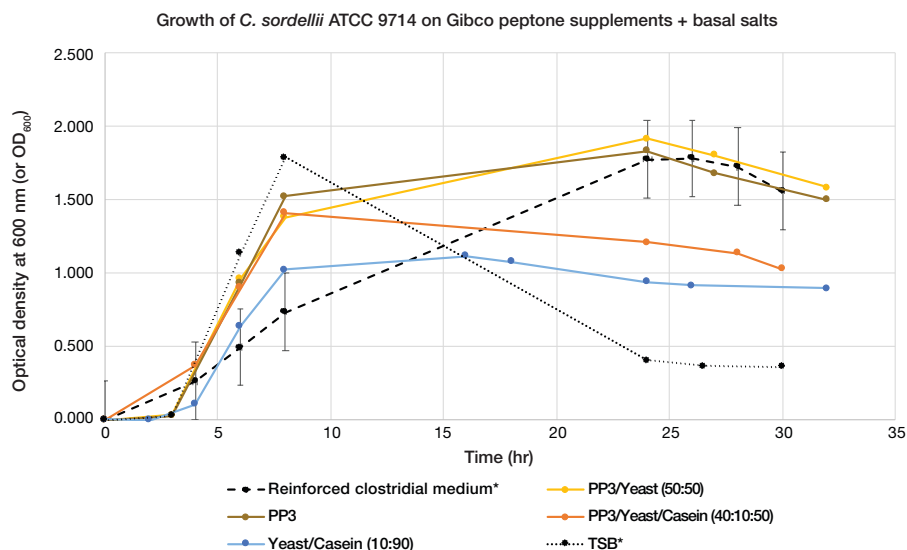
Applications

Gibco™ peptones can be used in a variety of animal health applications such as (but not limited to):

- Toxin production
- Antigen production
- Mammalian viral production
- Microbial production / fermentation

Gibco peptones can support strong growth in a variety of organisms, including fastidious species, when combined with as little as a simple basal salts solution.

Our peptones can be used individually or in different blending combinations and ratios to help you achieve the desired performance for your particular strain or process.



* Commercially available competitor alternatives (shown as dotted line graphs).


A broad portfolio to support various cell types and organisms

These are examples of how our peptones can be used with different cell lines and organisms. Peptones can be blended and applied to other cell lines and organisms and, with our technical knowledge, we can support you throughout your process.

Gibco™ product	Cell type and organism*				
	Mammalian			Microbial (bacterial)	
	BHK	MDCK	Vero	Mycoplasmas	Clostridia
Bacto Proteose Peptone No. 3	x	x	x	x	x
Bacto Tryptose Phosphate Broth	x	x	x		
Bacto Casamino Acids	x	x	x		
Bacto Beef Extract, Desiccated					x
Bacto Brain Heart Infusion				x	
Bacto Brain Heart Infusion, Porcine				x	
Bacto Proteose Peptone					x
Bacto Proteose Peptone No. 4					x
Bacto Soytone			x		
Bacto TC Lactalbumin Hydrolysate	x	x		x	
Bacto Tryptone				x	
Beef Extract Powder					x
Biosate Peptone					x
BiTek Proteose Peptone					x
Difco PPLO Broth				x	
Difco Tryptone Peptone					x

* Each x denotes peptone support for the cell line/organism.

Peptone Selection Tool



We are proud to offer a wide range of peptones and supplements tailored for the biopharmaceutical and vaccines markets. Our peptones are specifically designed to enhance performance by enabling high titers and yields while facilitating top quality and managing variability.

We have provided peptone recommendations based on your filter selections, listing results in order of highest recommendation to lowest.

Use the tool below to identify the peptones that will best suit your workflow and help you achieve outstanding results.

[contact us](#)

Keyword Search:

Reset Filters

Show All Filters

Cell Type	Organism	Application	Source	Peptone Type
Microbial (Bacterial)	Enterococci	Microbial Culture	Animal Origin	Bovine, Casein (Bovine)
Mammalian	Staphylococci	Microbiome	Animal Origin Free	Bovine, Porcine
Insect	Bacilli	Industrial Production		Casein (Bovine)
Microbial (Yeast)	Mycoplasmas	Vaccines (Animal)		Casein (Bovine), Porcine
Microbial (Fungal)	Streptococci	Mammalian Cell Culture		Casein (Bovine)

Use the Gibco™ Peptone Selection Tool to identify the peptones that will best suit your workflow and help you achieve outstanding results.

[Access the tool >>](#)

Ordering information

Product	Unit size	Cat. No.
Bacto Proteose Peptone No. 3	500 g	211693
	2 kg	212220
	10 kg	212230
	50 kg	211692
Bacto Tryptose Phosphate Broth	10 kg	260200
Bacto Casamino Acids	500 g	223050
	2 kg	223020
	10 kg	223030
Bacto Beef Extract, Desiccated	500 g	211520
Bacto Brain Heart Infusion	10 kg	237300
Bacto Brain Heart Infusion, Porcine	10 kg	256110
Bacto Proteose Peptone	500 g	211684
	10 kg	212010
Bacto Proteose Peptone No. 4	10 kg	211715
Bacto Soytone	500 g	243620
	10 kg	243610
Bacto TC Lactalbumin Hydrolysate	500 g	259962
	10 kg	259961
Bacto Tryptone	500 g	211705
	2 kg	211699
	10 kg	211701
Beef Extract Powder	500 g	212303
Biosate Peptone	454 g	211862
	25 lb (11.3 kg)	294312
BiTek Proteose Peptone	10 kg	253310
Difco PPLO Broth	10 kg	255410
Difco Tryptone Peptone	454 g	211921
	5 lb (2.3 kg)	211922
	25 lb (11.3 kg)	211923



Not sure where to begin? Try Gibco™ Starter Pak No. 2, designed specifically for vaccine production.

 Shop now at thermofisher.com/peptones

gibco

For Research Use or Further Manufacturing. Not for diagnostic use or direct administration into humans or animals.

© 2024 Thermo Fisher Scientific Inc. All rights reserved. All trademarks are the property of Thermo Fisher Scientific and its subsidiaries unless otherwise specified. Difco and the Difco logo are trademarks of Becton, Dickinson and Company and are used under license. **COL28627 0724**