

# Thermo Scientific Evolution UV-Vis Spectrophotometer Accessories

Make the most of every sample

## The chart here lists Thermo Fisher Scientific's extensive catalog of accessories for Evolution UV-Visible series of spectrophotometers

### Fiber Optic Probes



Preserve sample integrity while minimizing sample carryover. Probes can be used to measure, in real time, samples that are difficult to transfer to a cuvette. This could mean samples in a fume hood, large volume samples, or samples undergoing dissolution testing. Modules come with 10mm pathlength tip, but other sizes are available for separate purchase.

Part Number	Part Description	Instrument Compatibility
840-211400	Integrated fiber optic module	Evolution One Plus
10012201	Fiber optic coupler module	Evolution Pro
840-305100	Microprobe	Evolution One Plus Evolution Pro
840-307300	5mm pathlength tip	Evolution One Plus Evolution Pro
840-307400	10mm pathlength tip	Evolution One Plus Evolution Pro
840-307500	20mm pathlength tip	Evolution One Plus Evolution Pro
840-307600	Fiber optic probe body only	Evolution One Plus Evolution Pro

### Integrating sphere



Light reflected at all angles is captured and measured by the sphere, allowing you to obtain an accurate measurement of how much light passes through solid or turbid samples. Samples can be measured directly, or in a cuvette or powder cell.

Part Number	Part Description	Instrument Compatibility
222- 269400	Integrating Sphere (ISA-220)	Evolution One Plus
222-269500	Cuvette holder	Evolution One Plus
840-289300	Powder cell holder	Evolution One Plus
840-310000	Alignment block for powder cell holder	Evolution One Plus
840-289300+	Powder cell holder – sample	Evolution One Plus
840-289400	Powder cell holder – reference	Evolution One Plus
268-828900	1.0A filter	Evolution One Plus

## Praying Mantis



Use a Praying Mantis accessory for diffuse reflectance measurement of powders as well as extreme temperature and pressure control, when involving measurements of solid-state and non-soluble materials. It is ideal for characterization of small quantities of solid materials or powders. The Praying Mantis enables a diffuse reflectance measurement on samples as small as 3mm in diameter and can be used at room temperature as is, or at high or low temperature with additional chambers for separate purchase.

Part Number	Part Description	Instrument Compatibility
222-220000	Praying Mantis Module	Evolution Pro
268-833100	High temperature reaction chamber	Evolution Pro
268-833200	Low temperature reaction chamber	Evolution Pro
268-833300	Computer-controlled reaction chambers (110 V)	Evolution Pro
268-833400	Computer-control reaction chamber (220 V)	Evolution Pro
268-833500	High pressure dome	Evolution Pro
222-261600	Gas line conversion adaptor	Evolution Pro
268-833600	UV-to- FTIR conversion kit	Evolution Pro

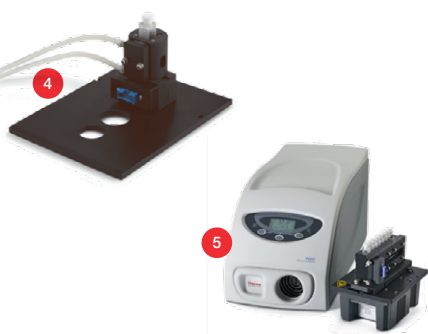
## VEEMAX



Measure film thickness or reflective properties from coatings at various angles from as low as 8 degrees to as high as 80 degrees. Accessory includes an alignment mirror that can also be used for baseline measurements.

Part Number	Part Description	Instrument Compatibility
222-239600	VEEMAX variable angle specular reflectance accessory	Evolution Pro

## Peltier – QNW & PCCU



Provide temperature control, with option for ramping or static, via the Peltier effect. All units come with a cell holder (single or multi), temperature controller, and coolant reservoir. An enclosed propylene glycol coolant system (3) is available in bundles or for separate purchase. Choose from 2 options: the QNW (1-3) for higher temperature or precision experiments, or the PCCU (4-5) for cost sensitive users.

Part Number	Part Description	Instrument Compatibility
845-345000 1	Single Cell Peltier System (QNW)	Evolution One Evolution One Plus Evolution Pro
840-406600 2	6-Cell Peltier System (QNW)	Evolution One Evolution One Plus Evolution Pro
840-347500 3	Enclosed Coolant for QNW Peltier Systems	Evolution One Evolution One Plus Evolution Pro
840-214600	Temperature probe hub	Evolution One Evolution One Plus Evolution Pro
840-262800	Cuvette stir bars, PK10	Evolution One Evolution One Plus Evolution Pro
699-131100 4	Single Cell Peltier System (PCCU)	Evolution One Evolution One Plus Evolution Pro
699-131200 5	8-Cell Peltier System (PCCU)	Evolution One Evolution One Plus Evolution Pro
840-250800	Replacement/additional 8-cell holder for PCCU	Evolution One Evolution One Plus Evolution Pro
840-219100	Replacement/additional 8-cell holder base for PCCU	Evolution One Evolution One Plus Evolution Pro
840-251100	Replacement/additional single cell holder base for PCCU	Evolution One Evolution One Plus Evolution Pro
840-25100	Replacement PCCU temperature controller	Evolution One Evolution One Plus Evolution Pro

## Recirculator packages



These temperature-controlled accessories are designed for applications like biochemical kinetics, enzymatic food analysis and equilibrium studies. Recirculator and requisite cell changer sold separately.

Part Number	Part Description	Instrument Compatibility
840-214900 1	Smart thermostatted 7-cell changer	Evolution One Evolution One Plus Evolution Pro
840-219000 2	Smart thermostatted 8-cell changer	Evolution One Evolution One Plus Evolution Pro
222-238800	TPS- 1500W Peltier recirculator	Evolution One Evolution One Plus Evolution Pro
699-123900	Recirculator, heat only, 115V	Evolution One Evolution One Plus Evolution Pro
699-124000	Recirculator, heat only, 230V	Evolution One Evolution One Plus Evolution Pro
699-124100	Recirculator, heat/cool, 115V	Evolution One Evolution One Plus Evolution Pro
699-124200	Recirculator, heat/cool, 230V	Evolution One Evolution One Plus Evolution Pro

## Rapid mixing accessory

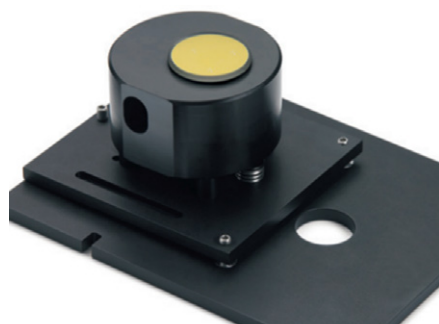


For controlled reactant mixing with applications in reactions with fast kinetics, this accessory allows a spectrometer to be used for following reactions that are at least a thousand times faster than those accessible manually.

Part Number	Part Description	Instrument Compatibility
222-234300	Standard accessory	Evolution One Evolution One Plus Evolution Pro
222-234400	Accessory with pneumatic drive	Evolution One Evolution One Plus Evolution Pro



## Specular reflectance accessory (SRA)



An SRA is specifically designed for use with reflective materials when measuring specular reflectance at a particular fixed angle.

Part Number	Part Description	Instrument Compatibility
222-244800	8° fixed angle	Evolution Pro
222-233500	15° fixed angle	Evolution One Evolution One Plus Evolution Pro
222-233600	20° fixed angle	Evolution One Evolution One Plus Evolution Pro
222-219500	30° fixed angle	Evolution One Evolution One Plus Evolution Pro
222-219600	45° fixed angle	Evolution One Evolution One Plus Evolution Pro
222-233700	60° fixed angle	Evolution One Evolution One Plus Evolution Pro

## Holders for slide-mounted accessories

These holders accommodate the industry standard 2" x 3" sample slides. They allow for sample positioning in multiple locations.

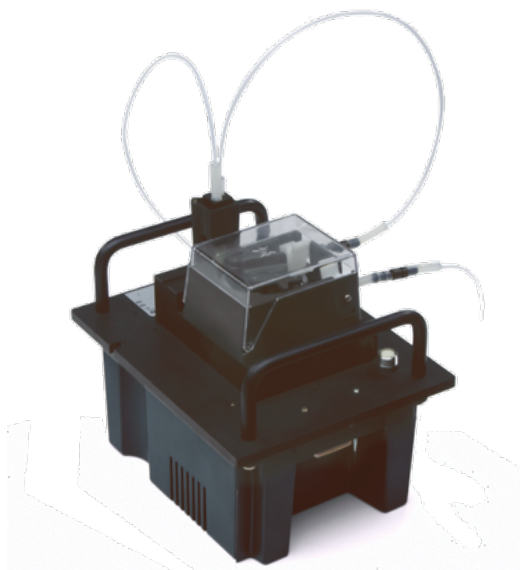
Part Number	Part Description	Instrument Compatibility
222-217200	Sample slide holder (detector side) and baseplate	Evolution One Evolution One Plus Evolution Pro
222-217300**	Replacement sample slide holder configured for left side proximity (no baseplate)	Evolution One Evolution One Plus Evolution Pro
222-244900**	Sample slide holder for right side proximity (no baseplate)	Evolution One Evolution One Plus Evolution Pro
0022-022 **	Magnetic film holder sample slide	Evolution One Evolution One Plus Evolution Pro
222-217400**	Universal holder sample slide	Evolution One Evolution One Plus Evolution Pro
470-250600**	Blank magnetic strips for part #0022-022 magnetic film holder sample slide; pkg of 12	Evolution One Evolution One Plus Evolution Pro
335917-000**	Adjustable filter holder (no baseplate)	Evolution One Evolution One Plus Evolution Pro
335428-000	Thin film/filter holder (no baseplate)	Evolution One Evolution One Plus Evolution Pro

\*\*Requires: 222-217200 Sample slide holder/baseplate

## Autosampler & Sipper

Together, these provide automatic sample handling for QA/QC environments with high sample throughput (pharma, food/bev, environmental) or for research labs. Sipper can be used alone for smaller scale experimentation.

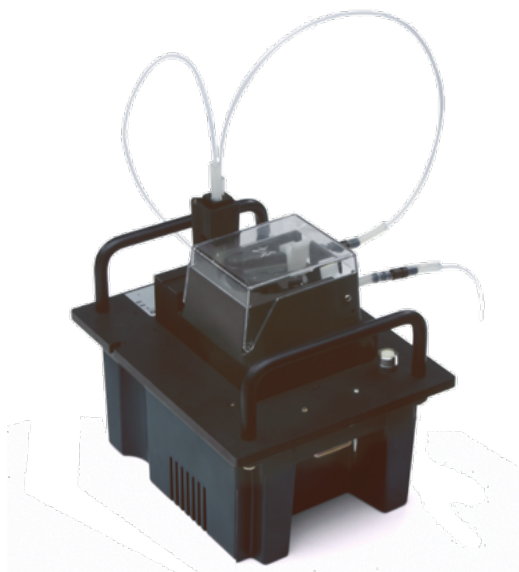
Part Number	Part Description	Instrument Compatibility
840-295900	ASX-280 Two Rack Autosampler	Evolution One Evolution One Plus Evolution Pro
840-296000	ASX-560 Four Rack Autosampler	Evolution One Evolution One Plus Evolution Pro
840-341600	Smart Sipper	Evolution One Evolution One Plus
840-372200	Smart Sipper	Evolution Pro
268-808000	Quartz Flow Cell, 10 mm pathlength, 8.5 mm Z-height, 450µL	Evolution One Evolution One Plus Evolution Pro
268-808100	Quartz Flow Cell, 50 mm pathlength, 8.5 mm Z-height, SF, 4x11	
268-808200	Quartz Flow Cell, 100 mm pathlength, 8.5 mm Z-height, SF, 4x11	
268-808300	Quartz Flow Cell, 10 mm pathlength, 15 mm Z-height, 450 µL	
268-808400	Quartz Flow Cell, 50 mm pathlength, 15 mm Z-height, SF, 4x11	
268-808500	Quartz Flow Cell, 100 mm pathlength, 15 mm Z-height, SF, 4x11	
268-812100	Quartz Flow Cell, 20 mm pathlength, 8.5 mm Z-height, SF, 4x11	
268-857400	Quartz Flow Cell, 10 mm pathlength, 8.5mm Z-height, 160µL	
268-857500	Quartz Flow Cell, 10 mm pathlength, 8.5mm Z-height, 70µL	
268-857600	Quartz Flow Cell, 10 mm pathlength, 15mm Z-height, 160µL	
268-857700	Quartz Flow Cell, 10 mm pathlength, 15mm Z-height, 70µL	
268-858200	Glass Flow Cell, slip-on fittings, 10 mm pathlength, 8.5mm Z-height, 75µL	
268-858300	Quartz Flow Cell, slip-on fittings, 10 mm pathlength, 8.5mm Z-height, 75µL	
268-858400	Quartz Flow Cell, slip-on fittings, 10 mm pathlength, 15mm Z-height, 75µL	
268-858500	Glass Flow Cell, slip-on fittings, 10 mm pathlength, 15mm Z-height, 75µL	
335977-000	Glass Funnel Flow Cell, 10 mm pathlength, 4 mm Z-height	



## Autosampler & Sipper (continued)

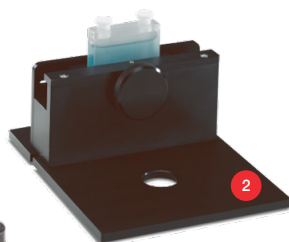
Together, these provide automatic sample handling for QA/QC environments with high sample throughput (pharma, food/bev, environmental) or for research labs. Sipper can be used alone for smaller scale experimentation.

Part Number	Part Description	Instrument Compatibility
699-129500	Silicone - Tubing kits	Evolution One
699-129600	Acid Resistant - Tubing kits	Evolution One Plus
699-129700	Chemical Resistant - Tubing kits	Evolution Pro
699-129800	Bio Compatible - Tubing kits	
840-238500	Hellma-style Flowcell Tubing & Screw Fittings - Tubing kits	
840-252900	Starna-Style Flowcell Tubing & Screw Fittings - Tubing kits	
268-815900	90-position, 8 mL vials - Additional racks	
268-816000	60-position, 14 mL vials - Additional racks	
268-816100	40-position, 20 mL vials - Additional racks	
268-816200	24-position, 30 mL vials - Additional racks	
268-816300	21-position, 50 mL vials - Additional racks	
268-816400	8 mL, PK 1000 - Sample vials	
268-816500	14 mL, PK 1000 - Sample vials	
268-816600	50 mL, PK 500 - Sample vials	
268-816700	30 mL, PK 500 - Sample vials	
268-816800	20 mL, PK 500 - Sample vials	





## Simple Cell Holders


**1**

**2**

**3**

Different cell holders accommodate various sizes and shapes of rectangular, cylindrical, and test tube cells.

Part Number	Part Description	Instrument Compatibility
10011201	50mm cylindrical cell holder with baseplate	Evolution One Evolution One Plus Evolution Pro
222-275700 <b>1</b>	100mm Cylindrical Cell Holder**	Evolution One Evolution One Plus Evolution Pro
10011701	10mm Rectangular Cell Holder with base plate – 15mm Z-height	Evolution One Evolution One Plus Evolution Pro
10011101 <b>2</b>	100mm Rectangular Cell Holder with base plate – 8.5mm Z-height	Evolution One Evolution One Plus Evolution Pro
840-211800	Combination Filter, Vial (up to 18mm), and Cell Holder (up to 10mm) with baseplate	Evolution One Evolution One Plus Evolution Pro
840-211700 <b>3</b>	Test tube holder (up to 40mm) and baseplate	Evolution One Evolution One Plus Evolution Pro
840-316200	Uvette 50uL cell holder with baseplate	Evolution One Evolution One Plus Evolution Pro
840-316100	Beckman-style cell holder	Evolution One Evolution One Plus Evolution Pro

\*\*Requires 222-261700 or 222-217200

Learn more at [thermofisher.com/uvvis](https://thermofisher.com/uvvis)

**thermo**scientific

For research use only. Not for use in diagnostic procedures. For current certifications, visit [thermofisher.com/certifications](https://thermofisher.com/certifications)

© 2025 Thermo Fisher Scientific Inc. All rights reserved. Coca-Cola is a registered trademark of the Coca-Cola company. All other trademarks are the property of Thermo Fisher Scientific and its subsidiaries unless otherwise specified. **BR52302 09/25**