

Introducing Thermo Scientific Chromeleon 7.4 software

Targeted MS quantitation—controlled and accessed from anywhere

Thermo Scientific™ Chromeleon™ software is trusted by laboratories worldwide to deliver compliant, reliable, and efficient chromatography workflows. Now, with version 7.4, data processing functionality is further extended to support targeted mass spectrometry (MS) quantitation and screening workflows in biopharma, environmental, clinical, and food safety laboratories.

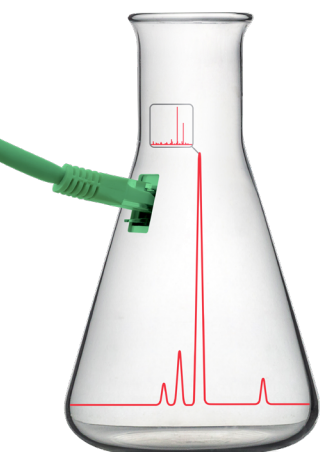
Designed for:

- **Faster data review**—tailored view settings enable a guided journey through processing to final report, reducing training and minimizing errors
- **Enhanced compliance**—data security and data integrity with GxP and 21 CFR Part 11 compliance readiness
- **Unified instrument control**—direct support for LC, GC, IC, CE, and MS/MS
- **Simplified IT management**—centralized administration with the flexibility of local or cloud deployment

New in version 7.4 for targeted MS workflows:

- MSⁿ library searching for both XIC and fragments
- Fragment scan matching to support DDA instrument methods
- Capability to generate MS component tables from .csv or .xml files, streamlining processing method creation
- Automated spectral deconvolution
- Customizable, spreadsheet-based reporting with querying for multi-consensus reports
- Chromatogram and spectrum review modes
- Support for targeted MS quantitation and screening

Discover how your lab can streamline processes and unlock higher productivity—with full confidence in data integrity. Contact your account manager today and move to Chromeleon 7.4 software.



Learn more at thermofisher.com/chromeleonms