



Pharma and biopharma

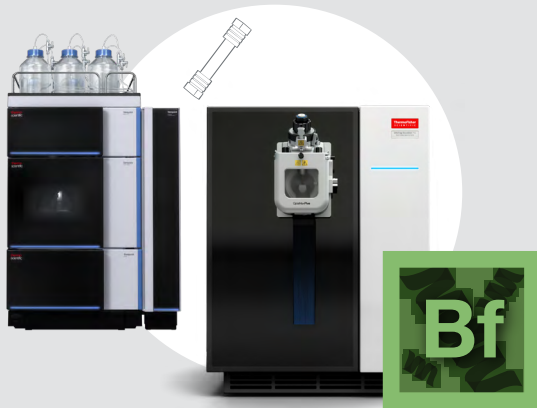
Analytical capabilities for GLP-1 analysis

As GLP-1 therapeutic development accelerates, the need for efficient, high-quality analytical workflows has never been more critical. Our integrated chromatography, mass spectrometry, data management, and service solutions streamline GLP-1 analysis while delivering the accuracy and reliability required in development and QC environments. With all technology delivered and supported by one supplier, your teams work within a fully integrated platform that supports faster, more confident decision-making.

Early development

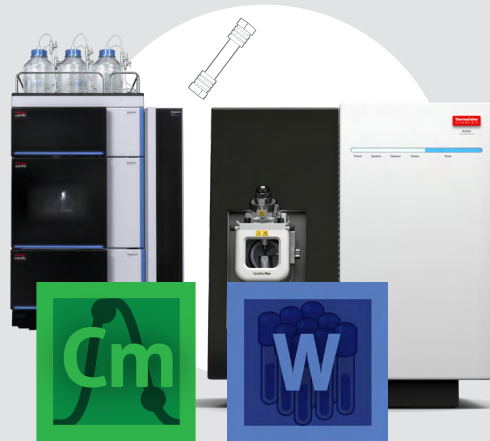
Late-stage development

Commercial manufacturing



- Thermo Scientific™ Orbitrap™ Excedion™ Pro MS using high-resolution mass spectrometry for characterization
- Thermo Scientific™ BioPharma Finder™ Software

- High mass resolution of the Orbitrap MS enables **precise localization of modifications** and sequence variants.
- Advanced algorithms **automate** sequence confirmation.
- Integrated hardware-software workflows **streamline GLP-1 development** and QC decisions.



- Thermo Scientific™ Stellar™ MS using nominal mass for quantitation
- Thermo Scientific™ Chromeleon™ CDS and Thermo Scientific™ Watson™ LIMS Software

- Achieve required **quantitative sensitivity** with ease.
- MS³ **reduces** sample-prep **complexity and cost**.
- Method co-developed with PPD **bioanalysis experts**.
- CDS–LIMS integration **streamlines data management**, compliance, and workflows.



- Thermo Scientific™ Vanquish™ UHPLC system for routine batch release
- Thermo Scientific™ Hypersil GOLD™ Peptide HPLC Column
- Chromeleon CDS

- The **development pipeline** is supported by the Hypersil GOLD Peptide HPLC column.
- Delivers precise, high-throughput separations for **robust workflows**.
- Supports **regulatory compliance** in QC labs.
- Provides efficient, **error-resistant** chromatographic data management.

Learn more at [GLP-1 solutions](#)

Services and support

Unity™ Lab Services provides world-class service solutions to support your instruments. Our comprehensive service portfolio was designed to meet the needs of your lab.

- **Instrument service plans**
- **On-demand services**
 - Compliance services
 - Preventive maintenance
 - Installation
- **Education**

Learn more at thermofisher.com/unitylabservices



Learn more at **GLP-1 solutions**