

## Workstation computer requirements for Thermo Scientific Chromeleon 7.4 software

Table 1. Hardware requirements\* for Thermo Scientific™ Chromeleon™ 7.4 software.

<b>Processor</b>	<b>Minimum:</b> With DAD: With MS: With Agilent™ ICF / Waters™ ICS: <b>Recommended:</b>	3 GHz Intel™ Core™ i5 3 GHz Intel Core i5 3 GHz Intel Core i7** 3 GHz Intel Core i5 3 GHz Quad Core i7** or better
<b>RAM</b>	<b>Minimum:</b> With DAD: With MS: <b>Recommended:</b>	8 GB 8 GB 16 GB** 16 GB or more**
<b>Hard Disk</b>	<b>Minimum:</b> Systems with 3D Detector(s): DAD at max rate (200Hz): MS systems:	120 GB*** 250 GB*** 15 MB/min 1 TB or more
<b>Display</b>	<b>Minimum:</b> <b>Recommended:</b>	1280 × 1024, 32-bit color 1440 × 900, 32-bit color or higher (4K now supported)
<b>USB Ports</b>	Thermo Scientific™ modules*:	1 or more additional USB port(s) USB 2.0 or higher

\*Additional hardware requirements for connecting instruments are detailed in the List of Supported Instruments, available in the /Documents/ folder of the Chromeleon 7.4 software distributable.

\*\* To take full advantage of this hardware, a 64-bit Microsoft™ Windows™ version is required.

\*\*\* These hard disk requirements are set to enable storage of a substantial amount of data. The software itself requires approximately 8 GB disk space on the C drive (twice as much during an update). In addition, a few GB of disk space must always be available on the C drive for sequence acquisition.

The table above shows the minimum and the recommended PC configurations for stand-alone installation of Chromeleon 7.4 software. PCs meeting minimum requirements may be suitable for some low-demand applications, but will not provide satisfactory performance in many applications. PCs meeting recommended requirements should be suitable for general applications.

For system requirements and compatibility when utilizing MS instruments, please refer to the MS Software Installation Guide provided with the Chromeleon software media.

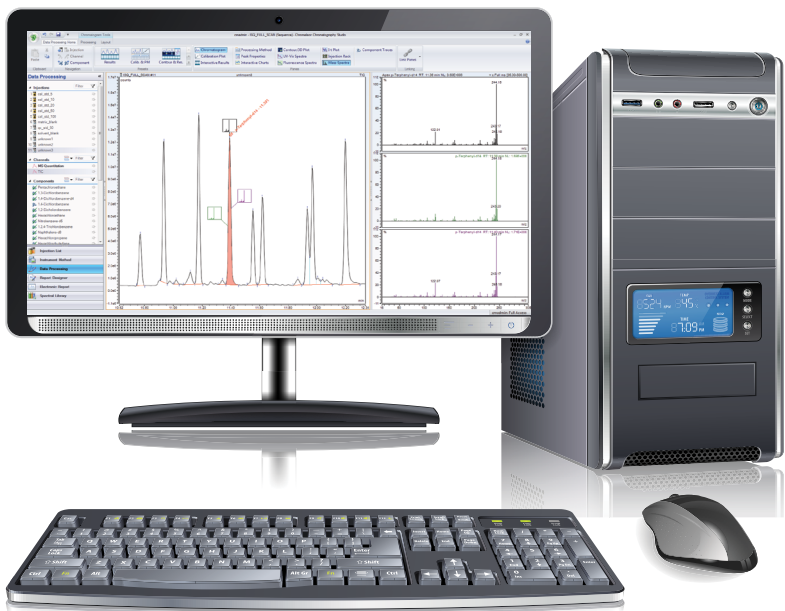


Table 2. Supported operating systems.

Microsoft Windows 10
Chromeleon 7.4 software can be operated on the <b>64-bit</b> editions of Microsoft™ Windows <b>10 Enterprise™*</b> and Microsoft™ Windows <b>10 Pro™*</b> .
Microsoft Windows 11
Chromeleon 7.4 software can be operated on the <b>64-bit</b> editions of Microsoft™ Windows <b>11 Enterprise™*</b> and Microsoft™ Windows <b>11 Pro™*</b> .

\* The option Turn on fast startup (recommended) should be disabled in the shutdown settings. This ensures that the Chromeleon Instrument Controller Service is stopped correctly on system shutdown and prevents potential instrument connection issues when the computer is powered up again.

Learn more at [thermofisher.com/chromeleon](https://thermofisher.com/chromeleon)