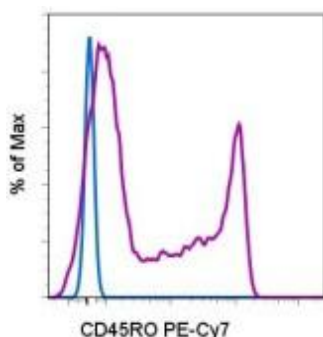


## CD45RO PE-Cyanine7


**Catalog Number(s):** 9025-0457-025 (25 tests), 9025-0457-120 (120 tests)



Fluorescence profiles of normal human peripheral blood lymphocytes unstained (blue histogram) or stained with CD45RO PE-Cyanine7 (purple histogram).

### Product Information

**Contents:** CD45RO PE-Cyanine7

 **Catalog Number(s):** 9025-0457-025 (25 tests), 9025-0457-120 (120 tests)

**Clone:** UCHL1

**Concentration:** 5 uL (0.5 ug)/test (a test is defined as the amount that will stain 1 x 10<sup>6</sup> cells in 100 uL)

**Host/Isotype:** Mouse IgG2a, kappa

**HLDA Workshop:** III

**Formulation:** Aqueous buffer, 0.09% sodium azide, may contain carrier protein/stabilizer.



**Storage Conditions:** Store at 2-8°C.

Do not freeze.



Light-sensitive material.



Caution, contains Azide



**Manufacturer:** eBioscience, Inc., 10255 Science Center Drive, San Diego, CA 92121, USA



Bender MedSystems GmbH, an eBioscience Company  
Campus Vienna Biocenter 2 A-1030 Vienna  
Austria

### Intended Use

The UCHL1 fluorochrome-conjugated monoclonal antibody reacts with the human CD45RO antigen. CD45RO can be detected in human biological samples using immunological techniques.

### Principles of the Test

Flow cytometry is a useful tool for simultaneously measuring multiple physical properties of individual particles (such as cells). Cells pass single-file through a laser beam. As each cell passes through the laser beam, the cytometer records how the cell or particle scatters incident laser light and emits fluorescence. Using this flow cytometric analysis protocol, one can perform a simultaneous analysis of surface molecules at the single-cell level.

### Description

The UCHL1 monoclonal antibody reacts with human CD45RO, a 180 kDa isoform of CD45. CD45RO is expressed by most thymocytes, activated memory T cells, granulocytes and monocytes. CD22 is a ligand for CD45RO. Expression of CD45RO and CD45RA is used commonly to discriminate subsets of peripheral T cells.

### Specimen Collection and Storage Instructions

Collect venous blood sample by venipuncture into a sterile blood collection tube using an appropriate anticoagulant (EDTA is recommended). Keep samples at room temperature (18-25°C). Prior to use, mix samples by gentle agitation.

### Materials Required But Not Provided

- 12x75 mm test tubes
- Buffers (eBioscience Flow Cytometry Staining Buffer, Cat. No. 00-4222 recommended)
- Lysis Buffer (eBioscience 1X RBC Lysis Buffer, Cat. No. 00-4333 or eBioscience 1-step Fix/Lyse Solution (10X), Cat. No. 00-5333 recommended)
- For intracellular staining use IC Fixation Buffer and Permeabilization Buffer, Cat. No. 88-8823 (intracellular cytokine or cytoplasmic protein staining) or Foxp3 Buffer Set, Cat. No. 00-5523 (For nuclear protein staining). Refer to the Best Protocols section of the eBioscience website for the "Staining Intracellular Antigens for Flow Cytometry" protocols.
- Viability stain (7-AAD Viability Staining Solution, Cat. No. 00-6993 or Propidium Iodide Staining Solution, Cat. No. 00-6990 recommended)
- Automated pipettes
- Centrifuge
- Vortex mixer
- Ice bucket or refrigerator
- Flow cytometer

### Test Protocol

NOTE: For intracellular staining, refer to the Best Protocols section of the eBioscience website for the "Staining Intracellular Antigens for Flow Cytometry" protocols.

1. Aliquot 100 µL of the test sample into tubes.
2. Add 5 µL of the appropriate antibody to each tube.
3. Incubate 30-60 minutes at 2-8°C. Alternatively, samples can be incubated at room temperature in the dark 15-30 minutes.
4. Add 2 ml of 1X RBC Lysis Buffer (at room temperature) per tube. Mix gently. (Alternatively, samples can be incubated with 2 mL 1-step Fix/Lyse Solution.)
5. Incubate samples in the dark at room temperature for 10 minutes. Do not exceed 15 minutes of incubation with the RBC Lysis Buffer.
6. Centrifuge samples at 300-400 x g for 5 minutes at room temperature, decant/aspirate supernatant and wash 1 time with 2 ml of Flow Cytometry Staining Buffer.
7. Centrifuge samples at 300-400 x g for 5 minutes at room temperature, decant/aspirate supernatant.
8. Resuspend stained cell pellet in 1 mL Flow Cytometry Staining Buffer and analyze samples on a flow cytometer.

### Limitations

1. For optimal performance of fluorochrome conjugated antibodies, store vials at 2-8°C in the dark. Do not freeze.
2. Centrifuge the antibody vial prior to opening to recover the maximum volume.
3. Except where noted in the protocol, all staining should be done on ice or at 2-8°C with minimal exposure to light.

### Performance Characteristics

Consistency of high-quality reagents is ensured by testing each lot of monoclonal antibody for conformance against characteristics of a standard reagent. Representative flow cytometric data is included where appropriate.

### Evidence of Deterioration

For questions or concerns regarding the performance or quality of products received, please contact eBioscience Technical Support (see below).

### References

Procedures for the Collection of Diagnostic Blood Specimens by Venipuncture (H3-A6), 3rd Edition published by the National Committee for Clinical Laboratory Standards.

McMichael AJ, Beverly PCL, et al. eds. Leucocyte Typing III: White Cell Differentiation Antigens. Oxford University Press. New York. 1987.

### Legal

FOR RESEARCH (NOT TO INCLUDE IN VIVO RESEARCH) AND/OR IN VITRO DIAGNOSTIC USE ONLY. THE ONLY PERMITTED COMMERCIAL USE IS PROVISION OF RESEARCH (NOT TO INCLUDE IN VIVO RESEARCH) SERVICES AND/OR IN VITRO DIAGNOSTIC SERVICES. NOT FOR THERAPEUTIC OR IN VIVO APPLICATIONS.

THE PRODUCT BEARING THIS LABEL IS LICENSED FOR SALE ONLY FOR RESEARCH (NOT TO INCLUDE IN VIVO RESEARCH) AND IN ADDITION MAY BE USED TO PERFORM RESEARCH (NOT TO INCLUDE IN VIVO RESEARCH) AND/OR IN VITRO DIAGNOSTIC SERVICES FOR THIRD PARTIES. IT IS NOT LICENSED NOR ARE THERE ANY IMPLIED LICENSES FOR ANY OTHER USE INCLUDING, WITHOUT LIMITATION, COMMERCIAL USES UNLESS EXPRESSLY AUTHORIZED BY EBIO SCIENCE IN WRITING. IF YOU INTEND TO USE THIS PRODUCT COMMERCIALY AND YOU DO NOT HAVE A LICENSE TO USE THIS PRODUCT FOR THE INTENDED COMMERCIAL PURPOSE, RETURN THIS PRODUCT, UNOPENED TO EBIO SCIENCE, INC. 10255 SCIENCE CENTER DRIVE, SAN DIEGO, CALIFORNIA 92121 USA AND ANY MONEY PAID FOR THE PRODUCT WILL BE REFUNDED.