

CDC37 Polyclonal Antibody

Store at -20°C

Catalog Number: A16591

Pub. No. MAN0009330 **Rev.** 1.00

Clonality: Polyclonal

Amount: 100 µL

Host/Class: Rabbit

Reactivity: Human CDC37

Species Reactivity: Human, Mouse, Rat, Monkey

Product Description

CDC37 is an important component of the HSP90 chaperone complex (1,2). It is involvement in cell-cycle progression and plays a role as a chaperone for a wide variety of kinases and other proteins (1-3). CDC37 protein has an amino-terminal kinase binding domain followed by a central HSP90 binding domain. It recruits and stabilizes kinases in the HSP90 complex by protecting the newly synthesized kinase peptide chain from degradation and promoting the next step of protein maturation (4,5). CDC37 also suppresses the ATPase activity of HSP90, thereby leading to conformational changes in the complex that preclude target kinase loading (6).

Product Specifications

Immunogen:	A synthetic peptide corresponding to residues surrounding Val367 of human CDC37
Apparent MW:	50 kDa
Gene ID:	11140
Protein Accession No.:	Q16543
Lot:	See product label

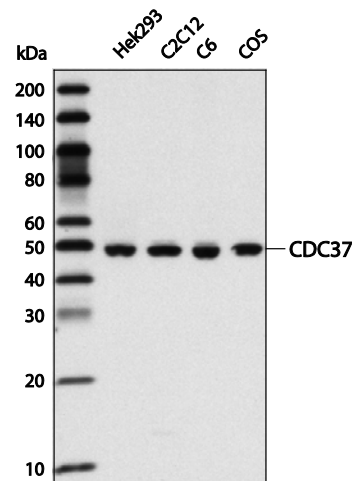


Figure 1 Western blot analysis of extracts from various cell lines using CDC37 Polyclonal Antibody.

Product Applications

Applications reported for this antibody include western blot. Because conditions may vary, it is recommended that each investigator determine the optimal amount of antibody to be used for each application.

Application	Recommended Dilution
Western blotting	1:1000

Storage and Handling

Store reagents at -20°C. Avoid repeated freezing and thawing. Do not aliquot the antibody.

Stability

When stored as instructed, expires one year from date of receipt unless otherwise indicated on product label.

Storage Buffer

10 mM sodium HEPES (pH 7.5), 150 mM NaCl, 100 µg/mL BSA, 50% glycerol.

For research use only. Not for use in diagnostic procedures

Manufacturing Site • 7335 Executive Way • Frederick • MD 21704 • E-mail: techsupport@lifetech.com

References

1. Karnitz, L.M. and Felts, S.J. (2007) Sci STKE 2007, pe22.
2. Caplan, A.J. et al. (2007) Trends Cell Biol 17, 87-92.
3. Caplan, A.J. et al. (2007) Cell Cycle 6, 3145-7.
4. Mandal, A.K. et al. (2007) J Cell Biol 176, 319-28.
5. Lee, P. et al. (2002) J Cell Biol 159, 1051-9.
6. Siligardi, G. et al. (2002) J Biol Chem 277, 20151-9.








Product Documentation

To obtain a Certificate of Analysis or Safety Data Sheets (SDSs), visit www.lifetechnologies.com/support.

Limited Product Warranty

Life Technologies Corporation and/or its affiliate(s) warrant their products as set forth in the Life Technologies' General Terms and Conditions of Sale found on Life Technologies' website at www.lifetechnologies.com/termsandconditions. If you have any questions, please contact Life Technologies at www.lifetechnologies.com/support.

Explanation of symbols

Symbol	Description	Symbol	Description	Symbol	Description
	Manufacturer		Catalog number		Batch code
	Use by		Temperature limitation		
	Consult instructions for use		Caution, consult accompanying documents		

DISCLAIMER: LIFE TECHNOLOGIES AND/OR ITS AFFILIATE(S) DISCLAIM ALL WARRANTIES WITH RESPECT TO THIS DOCUMENT, EXPRESSED OR IMPLIED, INCLUDING BUT NOT LIMITED TO THOSE OF MERCHANTABILITY, FITNESS FOR A PARTICULAR PURPOSE, OR NON-INFRINGEMENT. TO THE EXTENT ALLOWED BY LAW, IN NO EVENT SHALL LIFE TECHNOLOGIES AND/OR ITS AFFILIATE(S) BE LIABLE, WHETHER IN CONTRACT, TORT, WARRANTY, OR UNDER ANY STATUTE OR ON ANY OTHER BASIS FOR SPECIAL, INCIDENTAL, INDIRECT, PUNITIVE, MULTIPLE OR CONSEQUENTIAL DAMAGES IN CONNECTION WITH OR ARISING FROM THIS DOCUMENT, INCLUDING BUT NOT LIMITED TO THE USE THEREOF.

©2013 Life Technologies Corporation. All rights reserved. The trademarks mentioned herein are the property of Life Technologies Corporation and/or its affiliates or their respective owners.

For support visit www.lifetechnologies.com/support or email techsupport@lifetech.com

www.lifetechnologies.com

28 August 2013

